



NetMail[®]
Extreme Email Engine

Simple, Secure, Scalable Email

The Business Case for Simple, Secure, Scalable Email

Email has become vital to the way successful organizations maintain communication between a rapidly growing number of geographically dispersed users in the 24/7 economy. Unfortunately, email has also evolved into a complex communication platform that has become increasingly difficult to manage and at risk from viruses, spam, escalating storage growth, regulatory compliance, and more. Traditionally, point solutions have been widely used to address each of these risks, however point solutions do not address the needs of the entire messaging system. As a result, organizations are now under pressure to provide simple, secure, scalable email. M+NetMail was designed to help organizations, such as schools, universities, large corporations, and application service providers (ASPs), easily extend email and calendaring services to users around the world. A part of our integrated application platform for Risk Free Email, M+NetMail integrates directly with M+Guardian to provide seamless email security which is levels beyond traditional point solutions. M+NetMail simplifies email, drives down the cost associated with incorporating a high-performance messaging system, and allows users to securely access email anytime, anywhere.

Highly Scalable Architecture

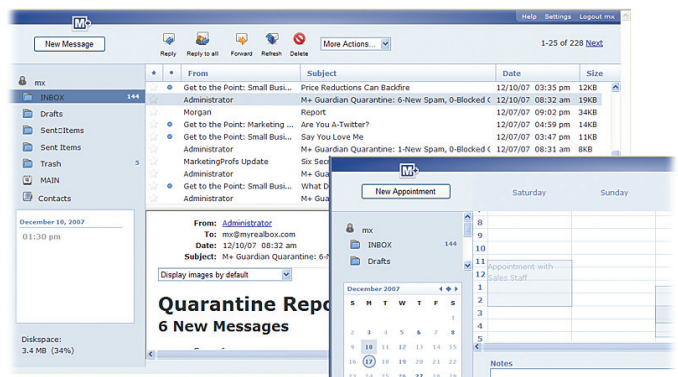
M+Netmail is a high-performance email and calendaring system designed to support large numbers of users. With its highly efficient, distributed architecture, M+Netmail scales to fit any size environment, from ten users to tens of thousands of users on a single server without sacrificing performance. M+NetMail can also be distributed across multiple servers to increase performance and ensure continuous availability.

Integrated Email Security

The unparalleled performance of M+Guardian guarantees maximum system availability, while delivering unprecedented simplicity of management. Compatible with M+NetMail and built on a modular & extensible platform, M+Guardian integrates advanced, multi-layered anti-spam detection with in-depth virus elimination. Its adaptive reputation filters for outbound scanning, and granular security policies, all work together to ensure your messaging system is able to meet the demands of your business.

Compatible with all Standards-Based Email Clients

M+Netmail supports Internet open standards to provide seamless messaging between M+NetMail and email clients that use these standards such as GroupWise 5.x and higher, Microsoft Outlook and Outlook Express, Thunderbird, Eudora, Pegasus, Mulberry, PINE, and numerous other integrated or standalone email clients.



Mailing Lists and iCalendar Support

Mailing Lists allow users to subscribe to an automated email account that sends information to them on a regular basis, such as company-wide announcements or upcoming events. M+NetMail supports two kinds of mailing lists: List Server Mailing Lists and eDir Mailing Lists. A designated moderator can be assigned to create and maintain List Server and eDir Mailing Lists and to review list postings to protect the organization from inappropriate content. Postings can be delivered as they are received or they can be digested and delivered on a scheduled basis. M+Netmail also supports the iCalendar protocol (iCal). iCal allows users to openly exchange calendaring and scheduling information to other users over the Internet.

eDirectory Integration

M+Netmail provides easy centralized administration and management by leveraging eDirectory to centrally store all user and server settings. So rather than having to create new accounts in a separate email system for every new and existing user, administrators create only one account in eDirectory and those users are able to use M+Netmail. Through eDirectory, you can also manage hardware and software configurations, and security policies from a single location.

 **Messaging Architects.**

Platform Independent

A part of our modular application platform for Risk Free Email, M+NetMail is a platform-independent solution that operates on all leading server platforms including NetWare 6.x and higher, Windows Server 2000 and 2003, and Linux SuSE 9.0 and higher.

Real-World, High-Volume Deployment

MyRealBox is a free email service that demonstrates the high performance and scalability of the M+Netmail Extreme Email Engine. M+Guardian, our next generation Secure Email Gateway, is currently installed in front of the MyRealBox server, ensuring that users' mailboxes are 100% spam-, virus-, spyware-, and adware-free. Powered by M+Netmail, and protected by M+Guardian, MyRealBox currently processes over 6.5 million messages a day on three servers with 80,000 users logging in via SMTP or IMAP.



Product Highlights

Improved Collaboration Tools – Features improved collaboration tools, such as a Message Preview Window, the ability to double-click a message in the list to open it, right-click functionality for many common tasks, an Auto-Save draft feature, and in-message image display options. M+NetMail also supports familiar keyboard shortcuts, such as CTRL+A to select all messages, CTRL+click to select individual messages, and SHIFT+click to select a series of messages.

New Contact Management Features – Includes a Contacts folder available from the main window, the ability to create groups within the address book, and the ability to select multiple users from the system address book to create groups.

Enhanced Calendaring – Introduces a new streamlined look and feel, a calendar Quick View Window available in the main window, and left-click functionality to drag and create new appointments.

M+NetMail Administration Enhancements – Allows administrators to configure and push down default settings to a large number of users. These default settings include the ability to assign a Sent Items and Drafts folder, standardized signatures on outgoing email to ensure proper corporate identity, and enabling the immediate purge of deleted messages to free up server space.

To learn more visit:
www.messagingarchitects.com/m-netmail

Compatible Standards-Based Email Clients

• Novell GroupWise • Outlook & Outlook Express • Thunderbird • Eudora • Pegasus • Mulberry • PINE

