

GWCommander V3.x

Administrators Guide

Table of Contents

1. Introduction	2
1.1 Requirements	3
2. Setting up GWCommander	4
2.1 Running the Setup Program.....	4
2.2 Configuring GWCommander v3	5
3. Defining Tasks.....	11
3.1 Selecting Execution Module	11
3.2 Selecting Task's Targets	12
3.3 Configuring Task's Options	12
3.4 Setting Task's Execution Options	13
4. The GWCommander Daemon	14
4.1 Running the daemon	14
4.2 Working with the daemon.....	14
4.2.1 Managing Tasks.....	14
4.2.2 Monitoring a Task's execution	15
5. Adding new Modules to the Commander	16
5.1 From ZIP file.....	16
5.2 With Setup Program	16
5.3 Licensing Modules.....	16
6. Support and Upgrade Protection.....	16

1. Introduction

GWCommander V3.x from OpenNet Software Ltd. is a modular management platform for Novell's GroupWise v7.x and above.

GWCommander V3.x is developed with the latest technologies and is very flexible and user friendly.

Running as .Net application, GWCommander v3 has the capability to add new functionality without complex upgrades, licensing, and configuration.

The features offered by the GWCommander v3 modules are defined as module-dependant tasks, executed immediately or at given date and time. Recurring Tasks may be scheduled to run periodically, for example each day, week, month, etc.

GWCommander V3.x has two main components:

- GWCommander Wizard, and
- GWCommander Daemon

The Wizard is a simple application that connects to the GroupWise system, sets basic configuration, displays available modules and presents administrators with simple GUI to define Task's options.

The Daemon is a resident program that monitors and executes pending tasks, re-schedules recurring tasks, and sends admin-, and user-notification messages.

GWCommander V3.x modules will be released from OpenNet Software Ltd. from time to time. Each module will expose some common functionality, for example, the Calendar module allows administrators to post events in users' calendars.

New modules don't require installation, they only need to be copied to the GWCommander v3 program folder and, optionally, licensed.

Each licensable module will be fully functional for 30 days, but the target users' count will be limited to five.

1.1 Requirements

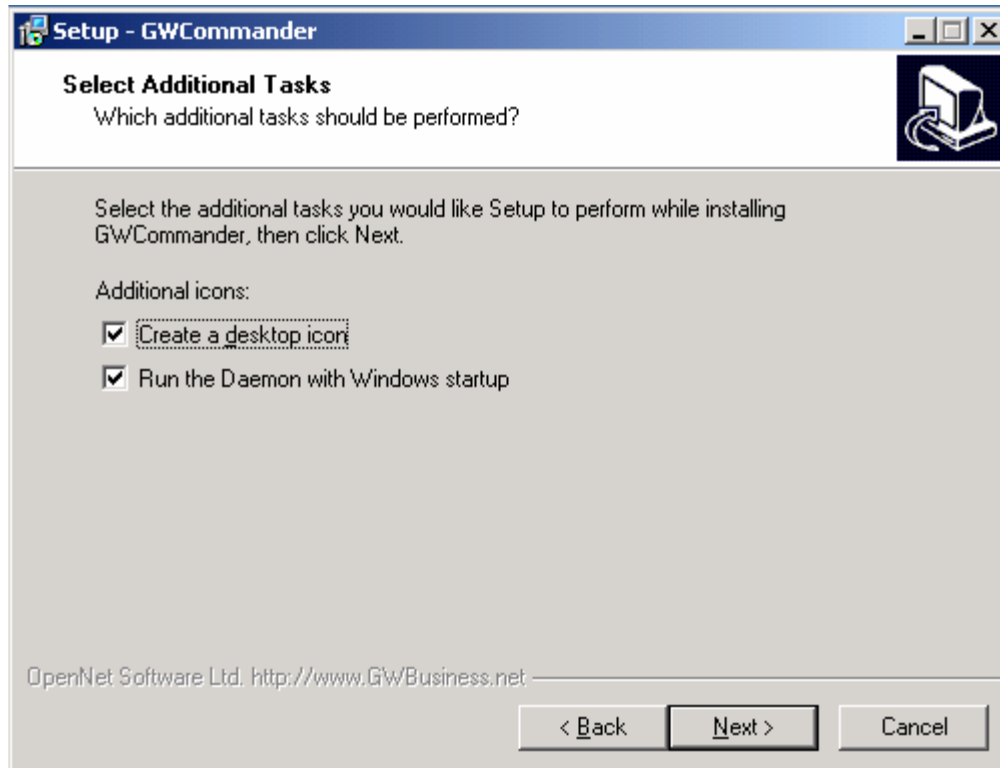
Operating System	<ul style="list-style-type: none"> • Windows 2000 Server • Windows 2000 Professional • Windows 2003 • Windows XP, SP2.
Dependencies	<ul style="list-style-type: none"> • GroupWise Client v7.x • Operation against GroupWise 6.5 is also supported, but with some limitations. • Microsoft's .Net Framework Runtime v1.1 and above • Internet Explorer v6.x and above • NetWare client v4.8.x and above
CPU	<ul style="list-style-type: none"> • Intel-compatible, at least 400 Mhz.
Memory	<ul style="list-style-type: none"> • At least 256 MB RAM. • 512 MB or more highly recommended.
Disk Space	<ul style="list-style-type: none"> • 10 MB for initial installation. • Additional disk space required for new modules, reports, logs, etc.
Other	<ul style="list-style-type: none"> • Admin-equivalent connection to NDS, during the setup, definition and execution of tasks. • Full file access rights to the Primary Domain directory, during setup and initial configuration.

2. Setting up GWCommander

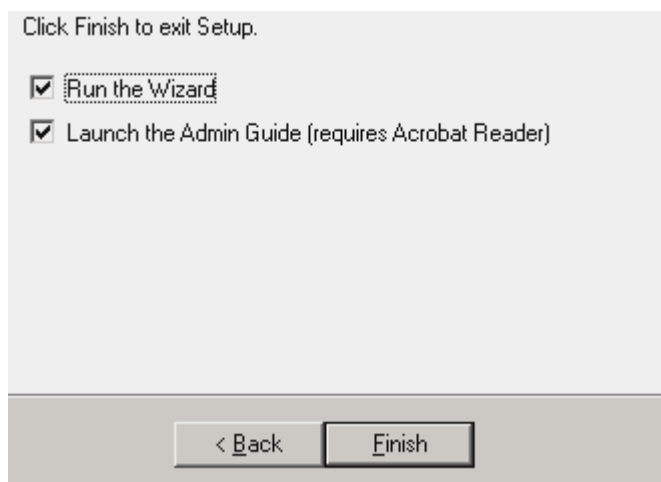
2.1 Running the Setup Program

Run the Setup executable (SetupGWC30.exe) and follow the on screen instructions.

Choose if you want a desktop icon to be created by the setup and whether to place shortcut to the Daemon in the Windows Startup folder:



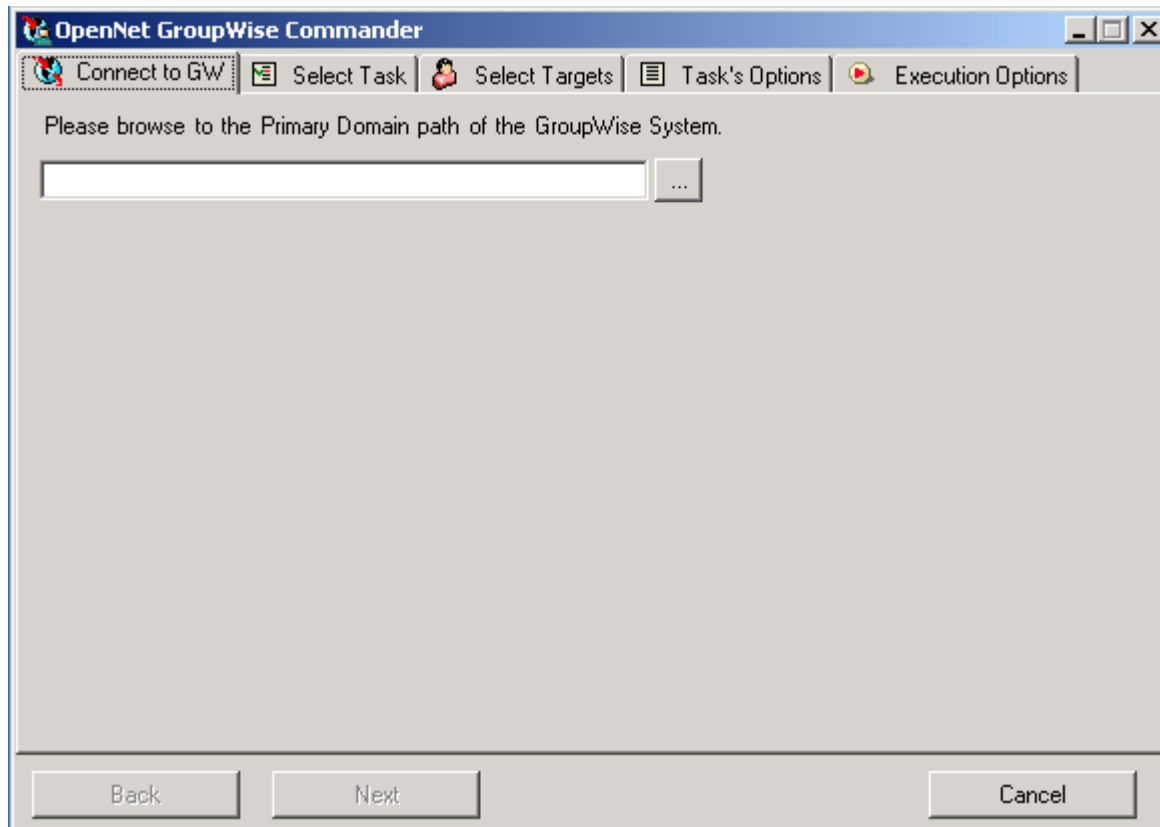
At the end of the setup, leave the options to run the Wizard and to display the manual (this file) selected:




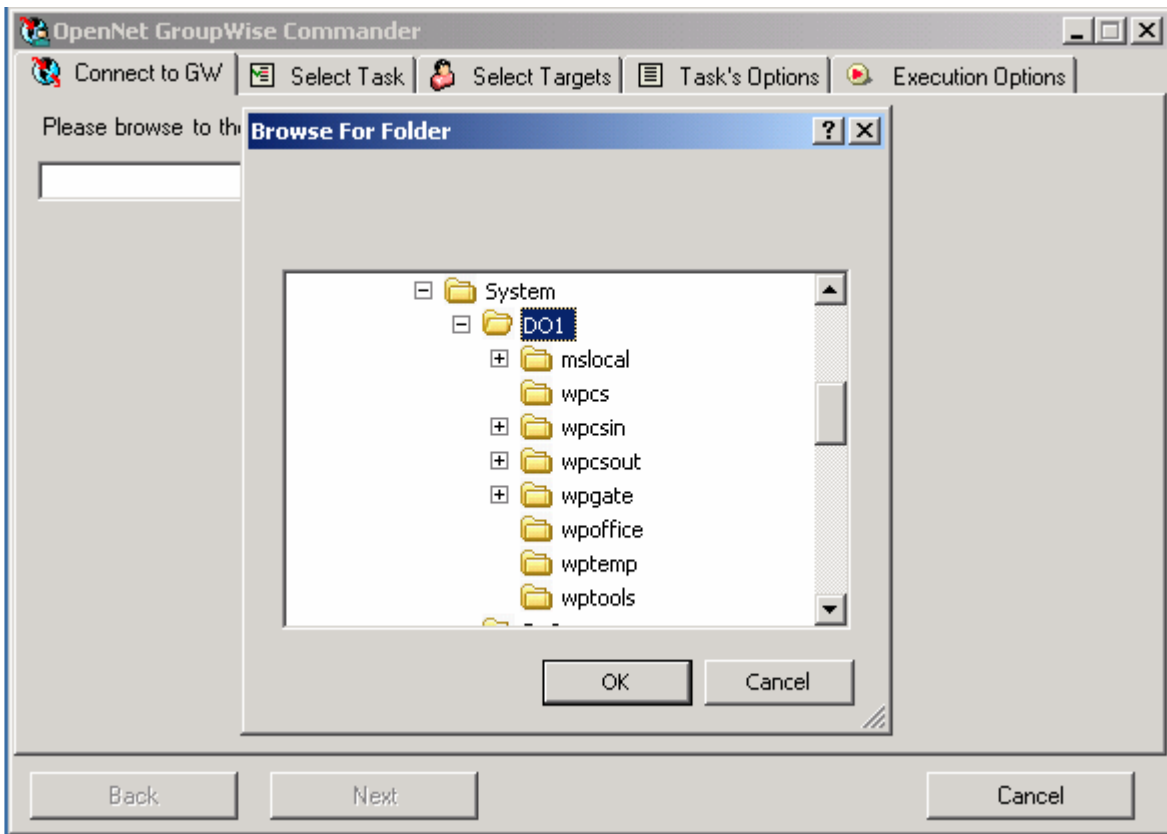
2.2 Configuring GWCommander v3

After the setup completes, the Wizard will be launched. Some basic configuration options must be configured before you can use GWCommander v3.

Note: You need to be logged into eDirectory with admin-equivalent rights to configure the program!

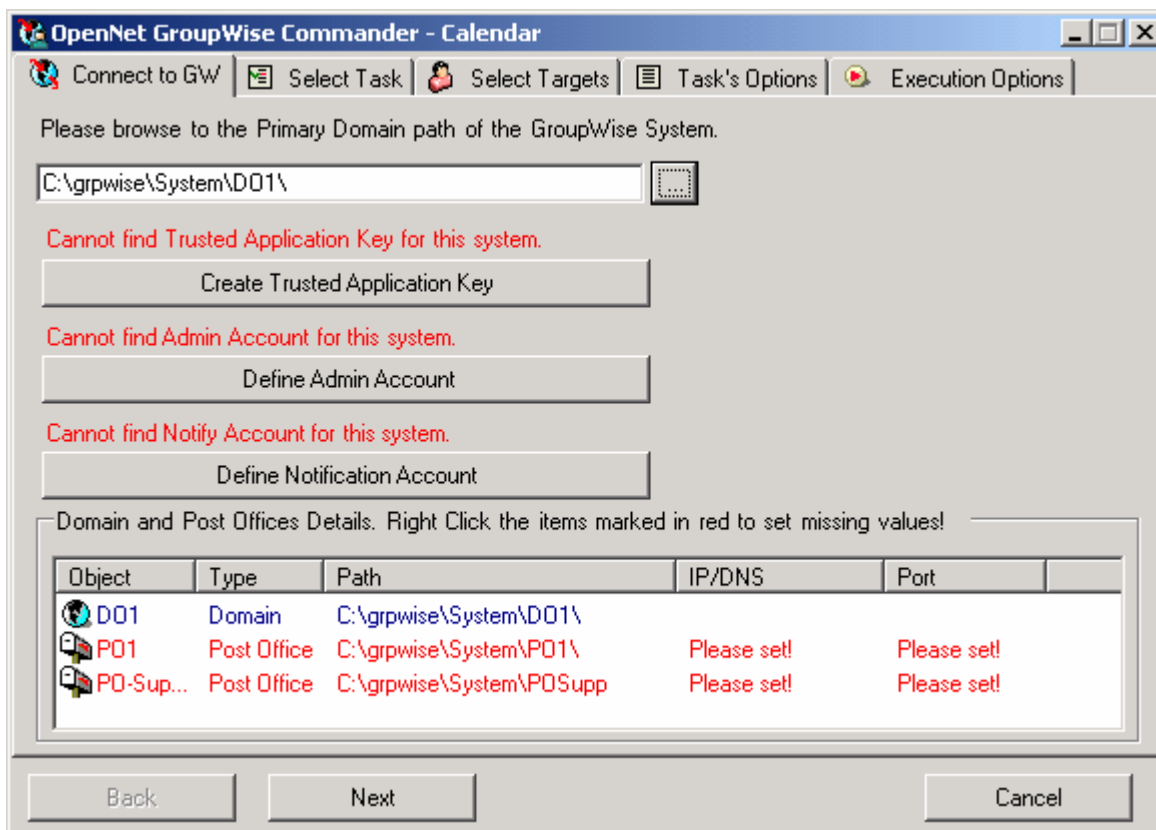


1. Click the Browse  button to select the path to your primary domain



Note: This must be the folder, containing the Primary Domain database: WPDMAIN.DB

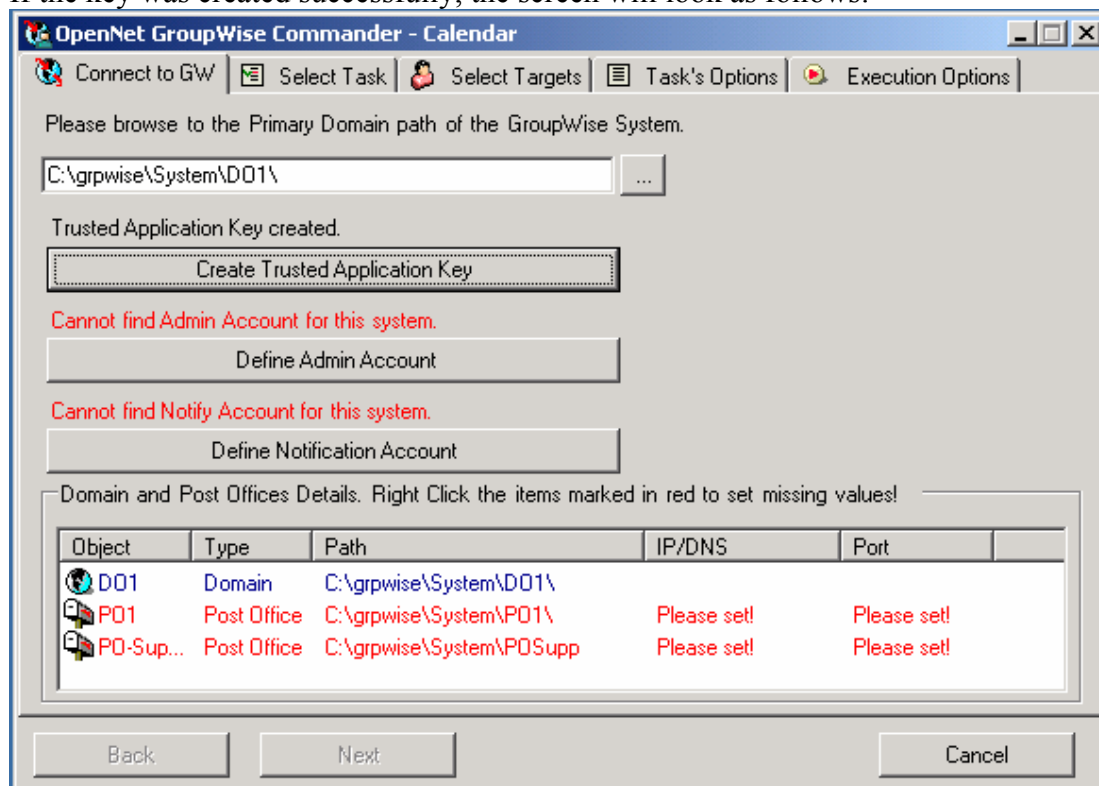
2. Click Ok.



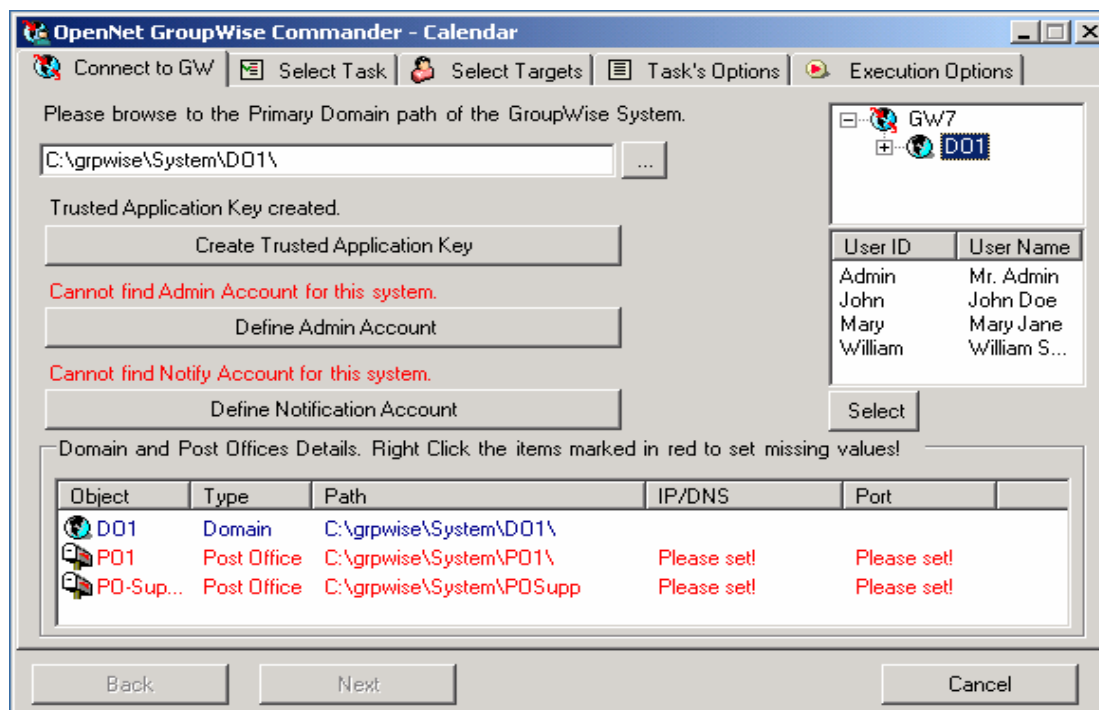
- You must define the Trusted Application Key. This key is used by the GroupWise system to authenticate GWCommander as trusted application, e.g. an application that is allowed to access user's accounts without providing their credentials.
- You must define two accounts:
 - i. Admin Account – this is the primary account that GWCommander will use for access to the GroupWise System Address book, to distribute calendar events, to send user messages, etc.
We recommend using a dedicated account.
 - ii. Notify Account – this is a GroupWise account to which notifications and logs from executed tasks are sent. This is usually the GroupWise Administrator's account. It may be the same as the Admin account, although this is not recommended.
- For each Domain in the GroupWise system, you must define a path to its database. Again, mapped drives are preferred to UNC paths.
- For each Post Office, you must define Path, IP address or valid DNS name and Port. The port is that used by standard GroupWise clients for users' connections, the default value is 1677.
- Usually the paths will be displayed after connecting to the system, if configured properly in ConsoleOne.

- Click the 'Create Trusted Application Key' button.

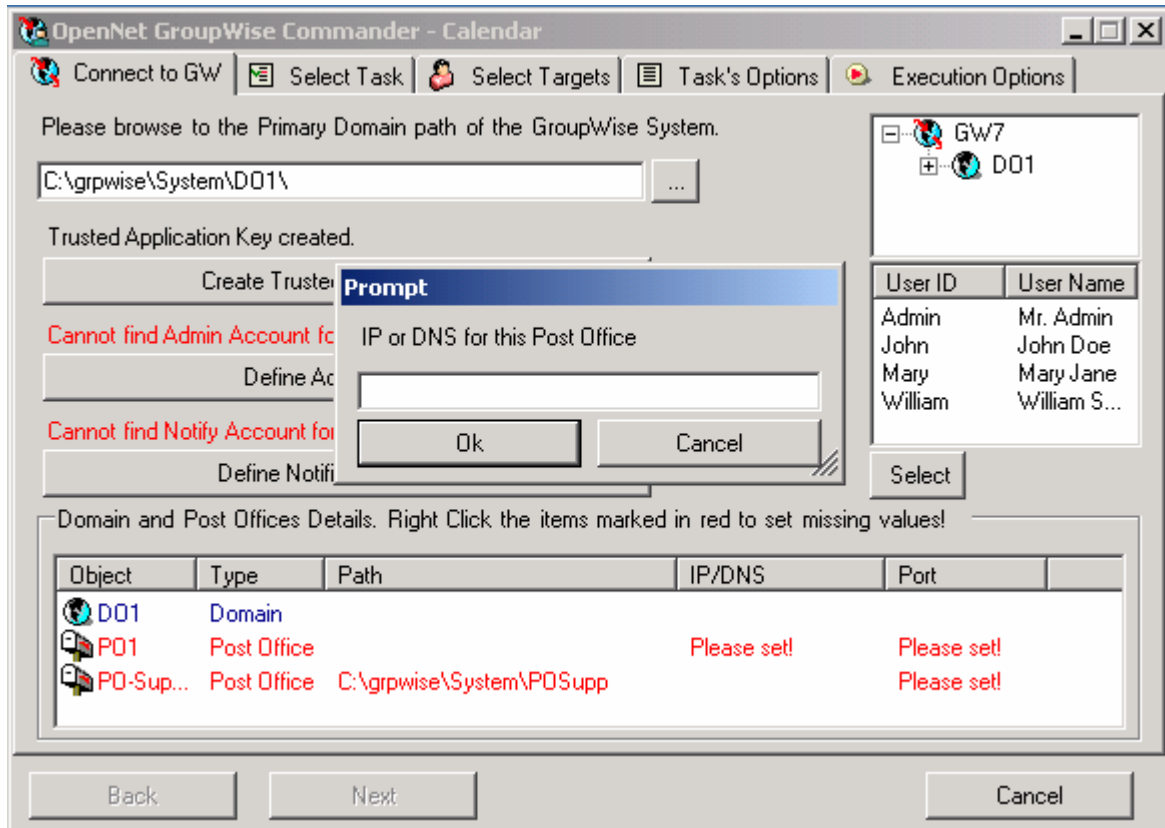
If the key was created successfully, the screen will look as follows:



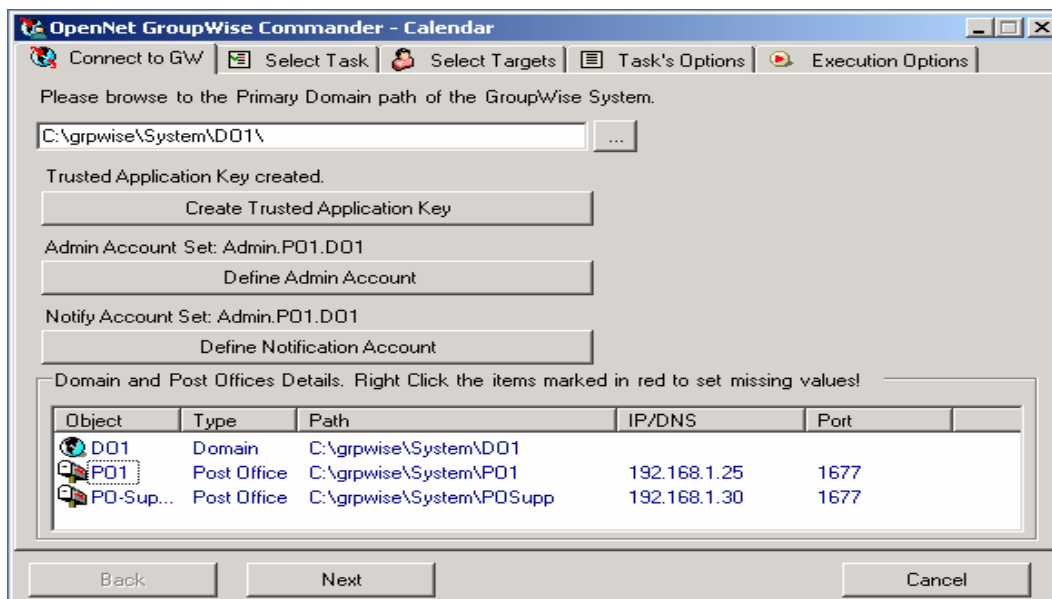
- Click the 'Define Admin Account' button. You will be able to browse the GroupWise system to select the Admin Account. Click 'Select' when the desired user is highlighted:



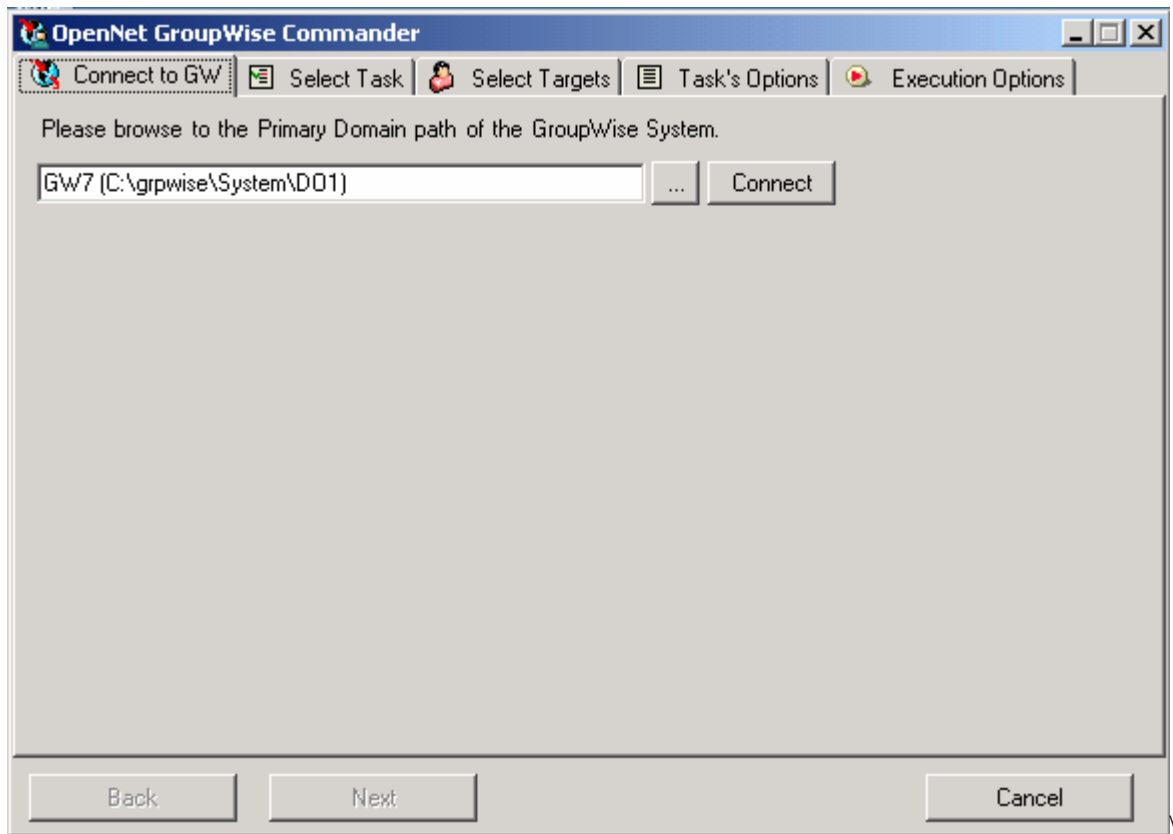
5. Click the 'Define Notification Account' button to select Notify Account.
6. Right click each Domain and set its Path, if it doesn't appear in the list
7. Right-click each Post Office and set its Path, if it doesn't appear in the list and then set IP/DNS and Port:



8. After all options are configured correctly, the 'Next' button will be enabled.



9. The configuration is saved to an XML file. Next time the Wizard is started you only need to select and connect to the configured system and all options will be filled automatically.



Instead of browsing to the Primary Domain path, click the Connect button to attach to the configured system (GW7 in the example above).

3. Defining Tasks

Tasks are scheduled runs of Commander Modules, with some predefined options. The options depend on the specific module and its features.

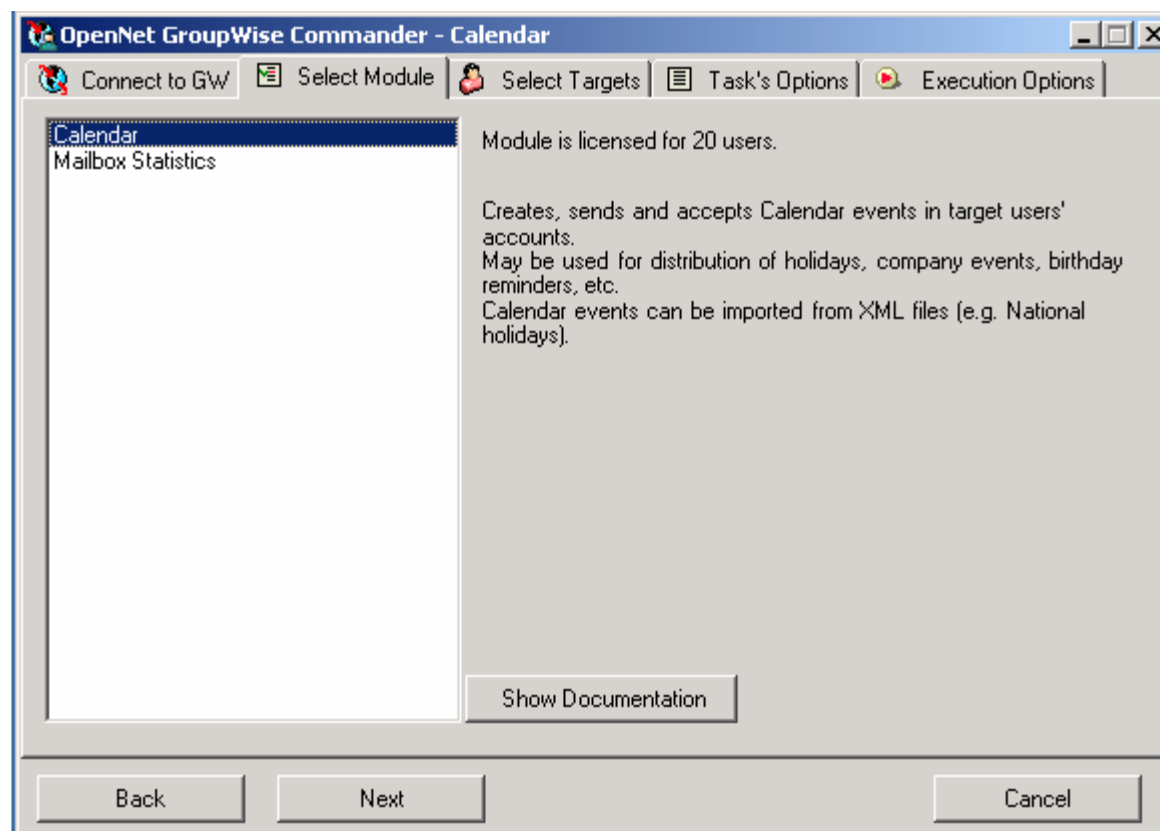
Tasks can be run immediately after their creation or in the future - once or recurrently (multiple times).

Tasks are created and configured with the Wizard.

To define a new task, start the Wizard, connect to the GroupWise system and click Next.

3.1 Selecting Execution Module

At the second Wizard screen, you are presented with the list of available modules. Clicking each module will display a short description of its functionality and licensing information. Select the module that will perform the task and click 'Next'

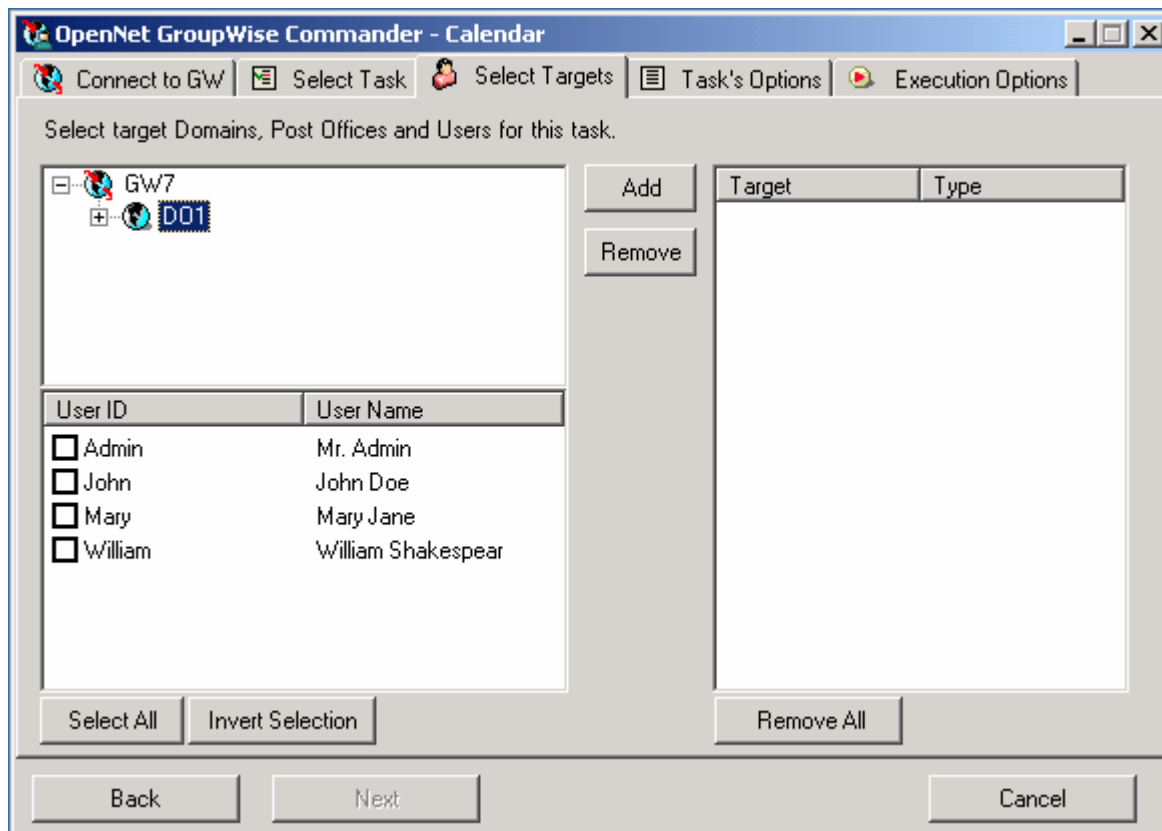


Click 'Show Documentation' to display module's specific manual. Adobe Acrobat Reader is required.

3.2 Selecting Task's Targets

On the third Wizard screen, you must select targets for the task. You can select Domains, Post Offices, and Users. **Note:** Some modules may not allow selection of individual users!

Expand the GroupWise system. Click on a Domain or Post Office to select it. The list of children user objects is displayed in the lower window.



- To add a Domain to the Targets list, select the Domain and click 'Add'
- To add a Post Office to the Targets list, select the Post Office and click 'Add'
- To add single user to the Targets list, select (click on) the user or check the checkbox near the user's name and click 'Add'
- To add multiple users to the Targets list, check the checkboxes near the users' names and click 'Add'
- To remove a target from the list, select it and click 'Remove'

When the target list is completed, click 'Next' to define task's options.

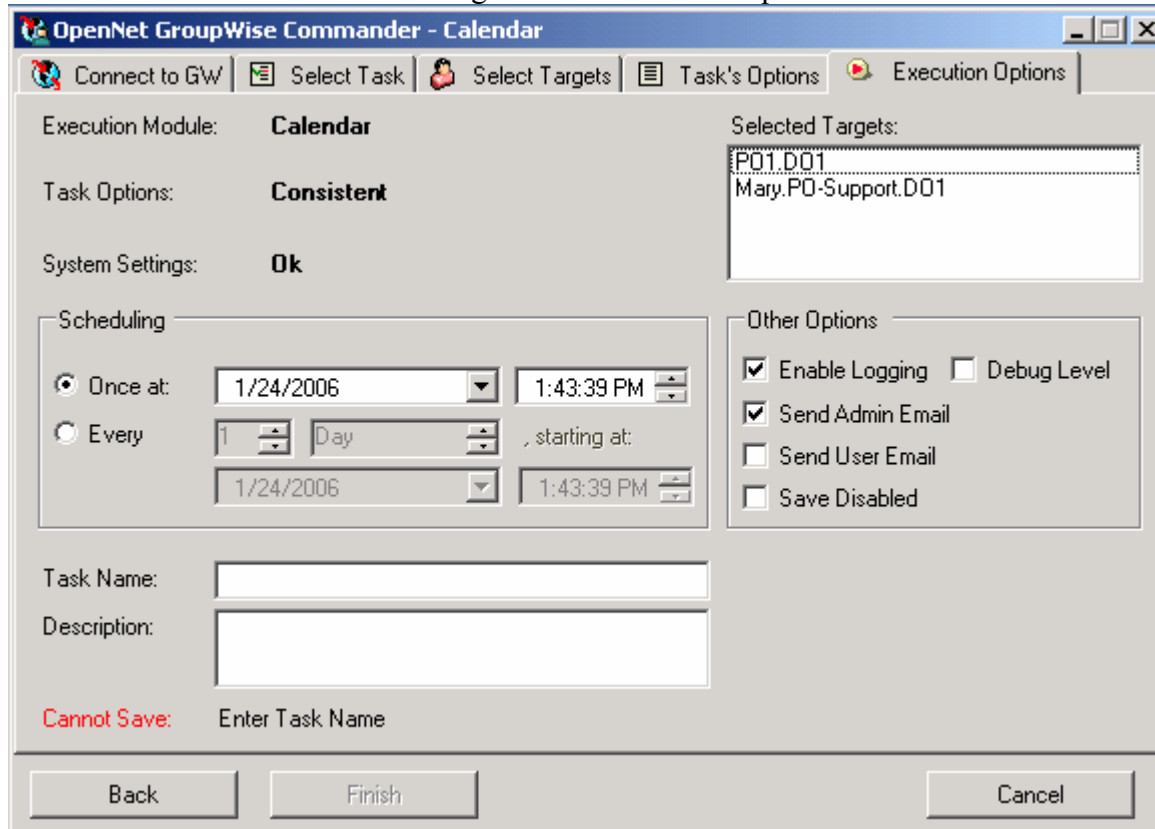
3.3 Configuring Task's Options

The fourth Wizard screen displays options that are specific to the selected module. See the module's documentation for more details.

When task's options are set, click 'Next' to set executions options and save the task.

3.4 Setting Task's Execution Options

The last Wizard screen allows setting of task's execution options:



The screen displays the execution module, selected for the task, whether the task's options are consistent or not, and if the system settings are Ok. The list of selected targets is also displayed, but cannot be modified from here. To do so, go back to the 'Select Targets' step.

- Set Tasks' scheduling
 - Select whether to run the task once and set execution time. The current date and time are automatically selected – keeping these values will trigger immediate execution of the task, after it is saved.
 - If you choose to create a recurring task, set scheduling options – execution interval and starting date and time.
- Set other options:
 - Enable logging – this option is selected by default and will trigger the creation of a log, when the task is executed.
 - Debug level logging will enable outputting of detailed information about the task's execution. Use only for debugging purposes.
 - Send Admin email – select this option to enable sending of a report email to the Admin Account. The email will contain reports about the task's execution.
 - Send User email - select this option to enable sending of a short notification email to the target Users' Accounts.
 - Save Disabled – check to save the task disabled, which will prevent its execution.

Enter a name for the task and (optionally) a task description and click 'Finish' to save the task. The Wizard will prompt you to save the task and run the Daemon, if it is not running.

4. The GWCommander Daemon

4.1 Running the daemon

After the initial setup of the program, the daemon is set to launch at each operating system startup (if the default option was selected) – by placing its shortcut in the Startup folder.

When a new task is configured, the Wizard will check if the Daemon is running and if it isn't will ask you to start it.

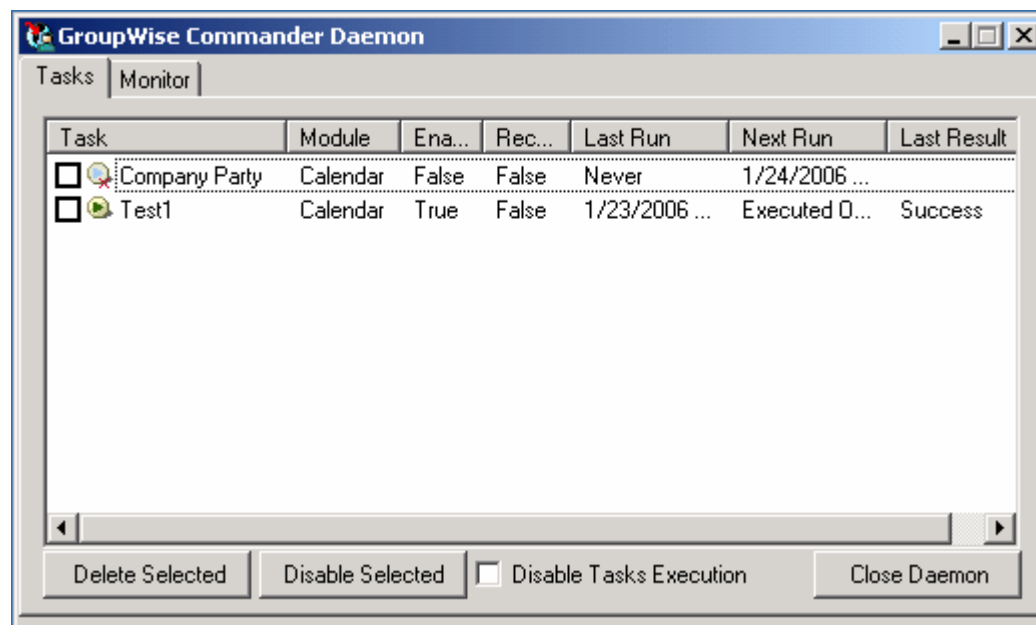
You can also manually start the Daemon from the program's group.

4.2 Working with the daemon

For the correct operation of the Daemon, a valid eDirectory connection with full rights to the GroupWise domain(s) must be present. Make sure that the workstation is logged to eDirectory with proper admin account!

4.2.1 Managing Tasks

The main Daemon screen displays list of configured tasks:



The list displays all configured tasks, their state (idle, running, disabled), the task's execution module, whether the task is recurring or not, last date and time the task was executed, next run (for recurring tasks) and last result.

- Idle tasks are displayed with a green icon.
- Execution tasks are displayed with a red icon
- Disabled tasks are displayed with a light-blue icon with small red "X".

Right-click a task to:

- Run it immediately;
- Disable or Enable it;
- Delete it.
- View Task's Details, Targets and Task-specific options (as XML).

You can also delete or disable all selected tasks at once.

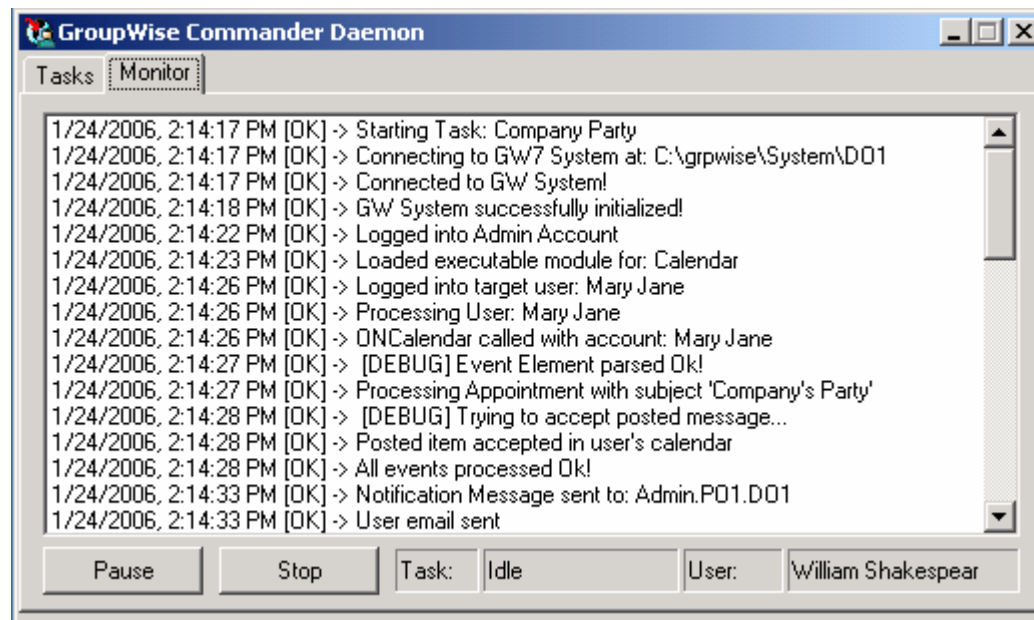
Click 'Disable Tasks Execution' to inhibit the execution of any scheduled task.

Click 'Close Daemon' to shut down the daemon.

Note: Clicking on the close control in the upper right Daemon's corner will minimize the program to the system tray.

4.2.2 Monitoring a Task's execution

During the execution of a task, you can monitor its progress from the Monitor tab:



- Click Pause to suspend a running task. The button caption will change to 'Resume'. Click the button again to resume task's execution.
- Click Stop to end the running task

Note: Tasks cannot be suspended and stopped at any point. The daemon will pause / stop execution when this is safe.

5. Adding new Modules to the Commander

5.1 From ZIP file

Unzip all files from the archive while preserving the file paths.
Copy the files, together with all extracted folders, to the Commander's program folder.

Optionally you can extract the archive into the Commander's program folder.

Restart the Wizard and the Daemon.

5.2 With Setup Program

Run the setup program.
When prompted where to install, select the Commander's program folder.
(C:\Program Files\OpenNet\Commander3 is selected by default).

Restart the Wizard and the Daemon.

5.3 Licensing Modules

Each licensable module needs separate license.
To obtain a license file, contact sales@gwbusiness.net.
The license file that will be sent to you needs to be copied to the Commander's program folder and the Wizard and Daemon need to be restarted.

6. Support and Upgrade Protection

OpenNet Software Ltd. offers email, phone and remote access support for free for the first month after license purchase.

The price for full-term support and Upgrade Protection for future releases is 20% of the license price, due each year.

OpenNet maintains free online forums.
Visit OpenNet's site at <http://www.open-net.biz> and select the Support link.